

CoreLED P/N 13115 (Assembly)

Sub-components

- Clip P/N 13010
- Lens P/N 13111 (Prototype)
- Housing P/N 13112 (Prototype)

Additional components (not included)

- Cap P/N 13113 (Sold separately)
- MLA (Sold separately)



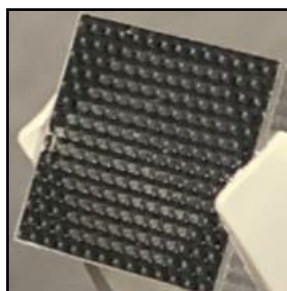
Product Description:

Submodule is comprised of three components: (1) a metal clip for PCB attachment, (2) collimating bi-convex lens and (3) a housing.

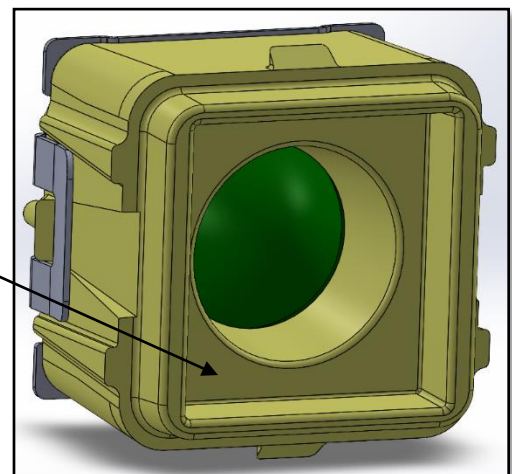
- A separate cap to retain the MLA is sold separately.
- Surface mountable submodule is designed for use with an MLA (Micro Lens Array). MLA is sold separately.

Key Features:

- Collimating optics designed to work with Osram OSIRE[®] E3323 RGB
- Other LEDs can be analyzed for fit & performance upon request from CoreLED
- Supplied in tape and reel
- Precision alignment (within $\pm 0.2\text{mm}$)
- Standard pick and place equipment



MLA placed here

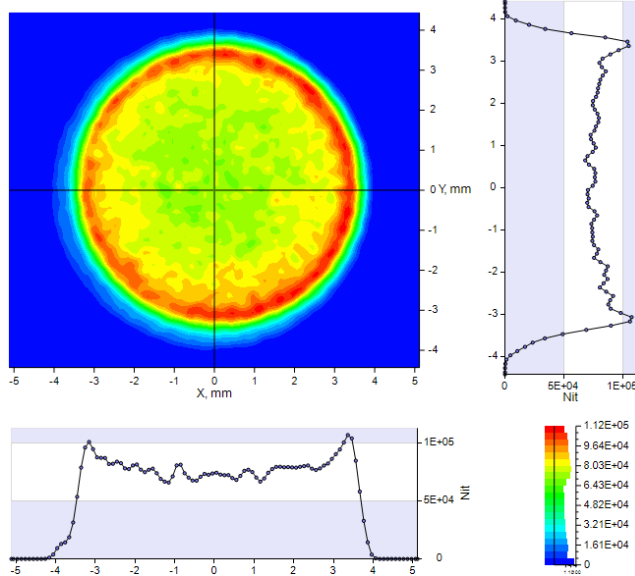
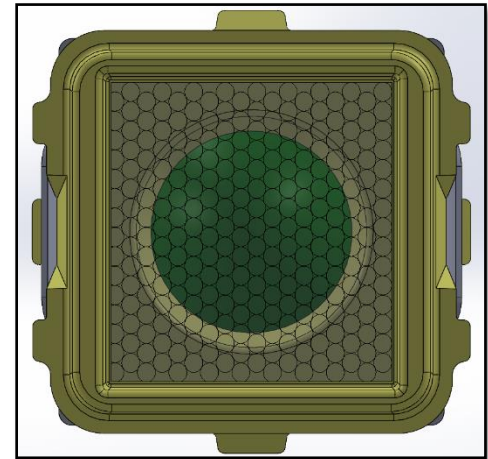


Simulation: Pattern Profile from Inner Lens

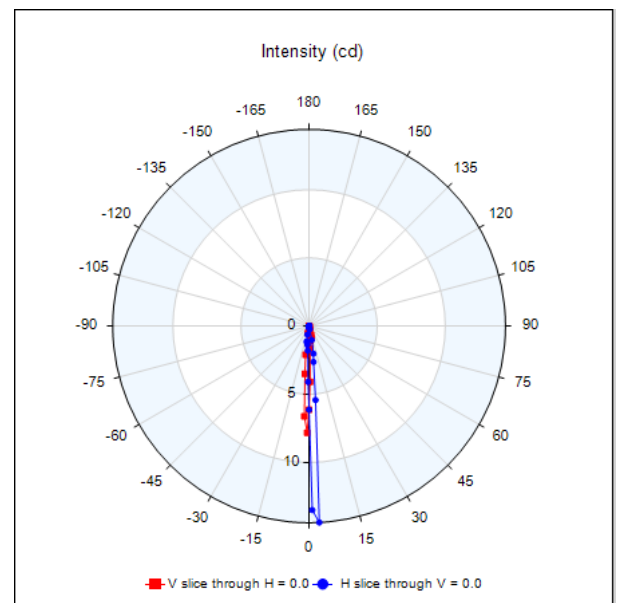
Osram OSIRE[®] E3323 Blue

CHARACTERISTICS

IES NEMA Type	0H x 0V
Maximum Candela	27
Maximum Candela Angle	-1.0H 1.0V
Horizontal Beam Angle (50%)	2.9
Vertical Beam Angle (50%)	4.0
Horizontal Field Angle (10%)	9.1
Vertical Field Angle (10%)	9.7
Total Rated Lamp Lumens	1
Total Efficiency	52.11%



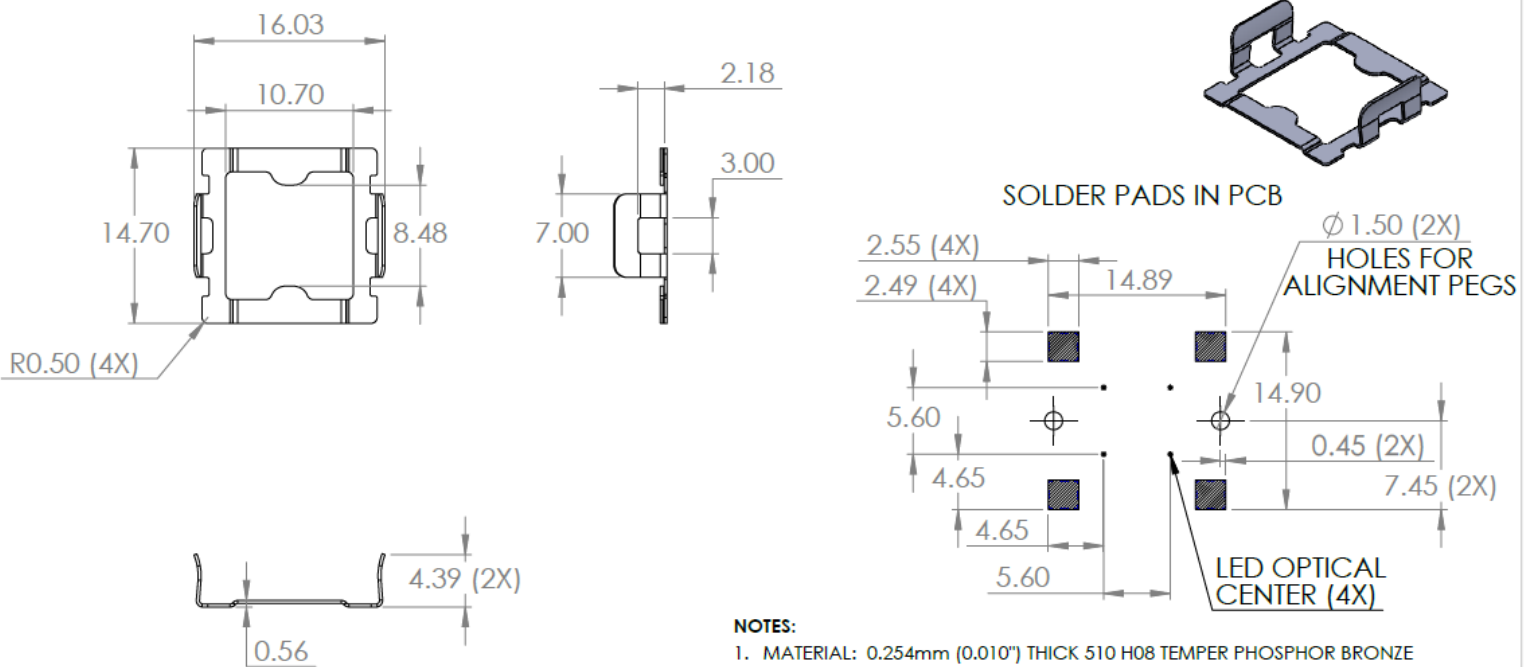
Spatial Luminance on MLA (nits)



Intensity (cd)

IES files and Raytrace models are available upon request from CoreLED Engineering.

Mechanical Profile: Collimating Assembly Solder Clip



- NOTES:**
1. MATERIAL: 0.254mm (0.010") THICK 510 H08 TEMPER PHOSPHOR BRONZE
 2. PLATING: 5.0 MICRONS MINIMUM SOLDERABLE Sn OVER Cu FLASH, PRE PLATED
 3. ALL TOLERANCES +/- 0.25 mm AND +/- 1 DEGREE UNLESS OTHERWISE SPECIFIED

UNLESS OTHERWISE SPECIFIED:		NAME	DATE
DIMENSIONS ARE IN MILLIMETERS	DRAWN	B.WELLS	02/26/26
TOLERANCES:	CHECKED		
FRACTIONAL ±	ENG APPR.		
ANGULAR: MACH ± BEND ±	MFG APPR.		
TWO PLACE DECIMAL ±	Q.A.		
THREE PLACE DECIMAL ±	COMMENTS:		

CoreLed Systems, LLC		
TITLE:		
COLLIMATING ASSEMBLY SOLDER CLIP		
SIZE	DWG. NO.	REV
A	P/N: 13010	B.1
SCALE: 2:1	WEIGHT:	SHEET 1 OF 1

PROPRIETARY AND CONFIDENTIAL

THE INFORMATION CONTAINED IN THIS DRAWING IS THE SOLE PROPERTY OF CORELED SYSTEMS LLC. ANY REPRODUCTION IN PART OR AS A WHOLE WITHOUT THE WRITTEN PERMISSION OF CORELED SYSTEMS LLC IS PROHIBITED.

NEXT ASSY	USED ON
APPLICATION	DO NOT SCALE DRAWING

5

4

3

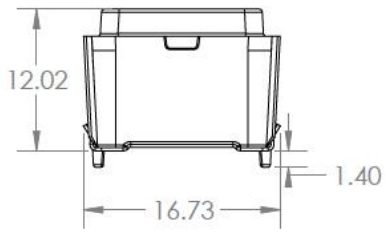
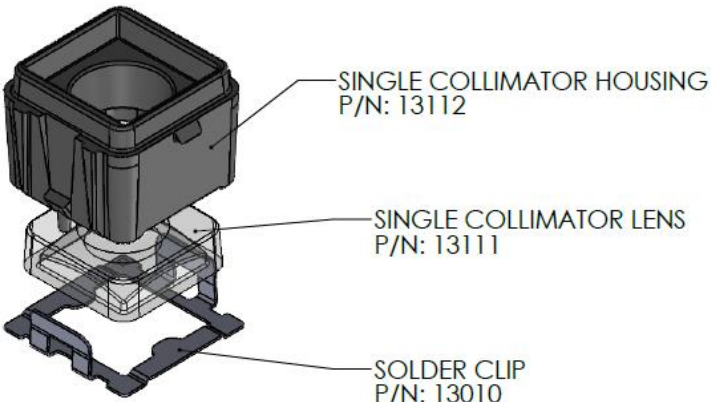
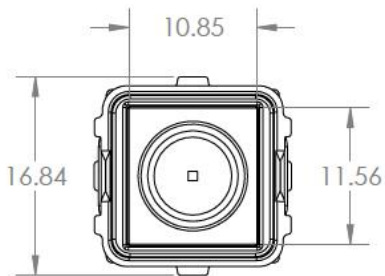
2

1

CAD files available upon request from CoreLED Engineering

Mechanical Profile: Single Collimating Assembly

Prototype Design



UNLESS OTHERWISE SPECIFIED:		NAME	DATE	CoreLed Systems, LLC TITLE: SINGLE COLLIMATING ASSEMBLY SIZE DWG. NO. REV A P/N: 13115 2.0 SCALE: 2:1 WEIGHT: SHEET 1 OF 2
DIMENSIONS ARE IN MILLIMETERS		DRAWN	B.WELLS 3/2/26	
TOLERANCES:		CHECKED		
FRACTIONAL ±		ENG APPR.		
ANGULAR: MACH ± BEND ±		MFG APPR.		
TWO PLACE DECIMAL ±		Q.A.		
THREE PLACE DECIMAL ±		COMMENTS:		
INTERPRET GEOMETRIC TOLERANCING PER:				
MATERIAL				
FINISH				

PROPRIETARY AND CONFIDENTIAL
 THE INFORMATION CONTAINED IN THIS DRAWING IS THE SOLE PROPERTY OF CORELED SYSTEMS LLC. ANY REPRODUCTION IN PART OR AS A WHOLE WITHOUT THE WRITTEN PERMISSION OF CORELED SYSTEMS LLC IS PROHIBITED.

NEXT ASSY	USED ON
APPLICATION	

DO NOT SCALE DRAWING

5 4 3 2 1

CAD files available upon request from CoreLED Engineering

Packaging: Individually packaged & delivered in tape and reel

Preliminary Design

