

All CoreLED Systems, LLC Optical Components are designed and manufactured in the USA.

- Reflector Description: Surface Mounted Reflector, 5X5 Flood
- Al Direct Metallized reflector coating
- Photometric pattern: 70° FLOOD
- Photometric Data: Contact CoreLED for IES files,  
Default Watts = 1 Watt, 1 Million Rays
- Mech Spec: SMR Family Part #11003-STAR-P1616-IR940nm see  
Product Data Sheet
- Packaging & Solder Spec: see Product Data Sheet
- Emitter name: OSOLON P1616 IR LED (1.6mm x 1.6mm Footprint)
- Emitter P/N: OSRAM SFH 4180S (940nm)

Dimensions:

7.54 mm Width  
11.99 mm Length  
3.5 mm Height

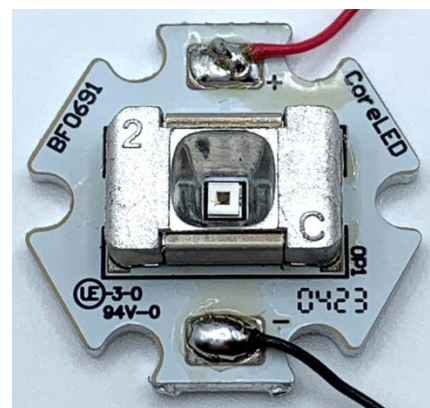
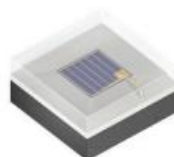
*See Part Drawing  
for more details*

IES NEMA Type	5H x 5V
Horizontal Beam Angle (50%)	72.6
Vertical Beam Angle (50%)	68.2
Horizontal Field Angle (10%)	91.9
Vertical Field Angle (10%)	89.9
Total Efficiency	86%

SFH 4180S

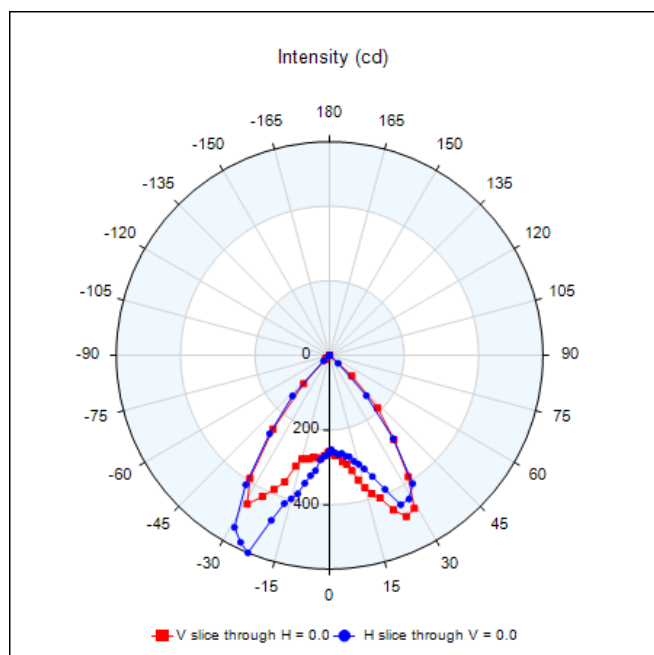
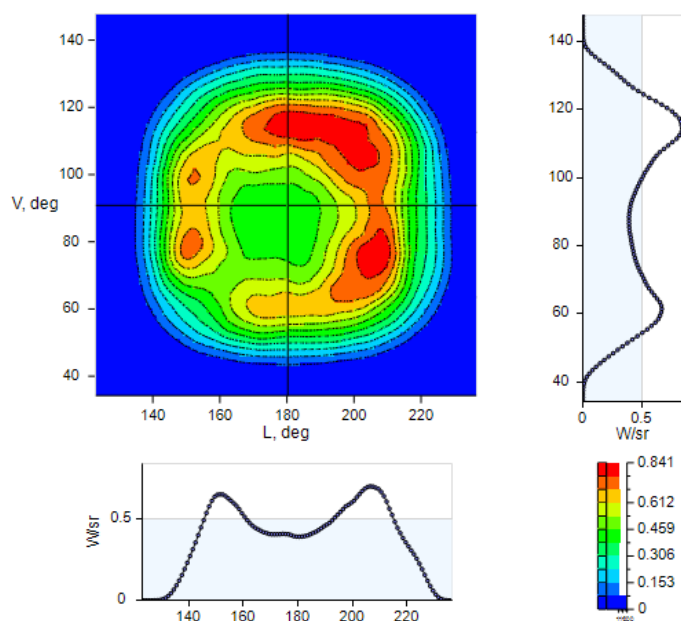
OSOLON® P1616

High Power Infrared Emitter (940 nm)



70 DEGREE FWHM

Radiant Intensity  
W/sr vs Angle



Results shown are from measured prototype samples.