

All CoreLED Systems, LLC Optical Components are designed and manufactured in the USA.

- Reflector Description: Surface Mounted Reflector, 5X5 Flood
- Al Direct Metallized reflector coating
- Photometric pattern: 70° FLOOD
- Photometric Data: Contact CoreLED for IES files,  
Default Watts = 1 Watt, 1 Million Rays
- Mech Spec: SMR Family Part #11003-STAR-P1616-IR850nm see  
Product Data Sheet
- Packaging & Solder Spec: see Product Data Sheet
- Emitter name: OSLON P1616 IR LED (1.6mm x 1.6mm Footprint)
- Emitter P/N: OSRAM SFH 4170S (850nm)

Dimensions:

7.54 mm Width  
11.99 mm Length  
3.5 mm Height

*See Part Drawing  
for more details*

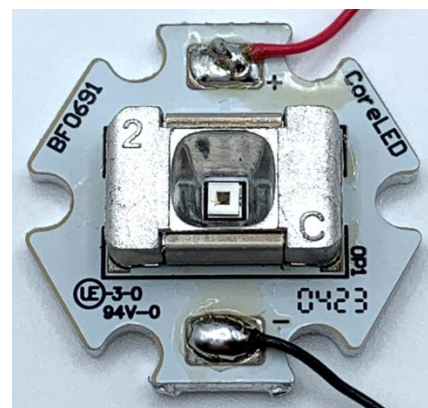
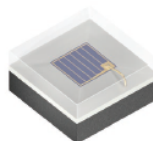
IES NEMA Type	5H x 5V
Horizontal Beam Angle (50%)	64.9
Vertical Beam Angle (50%)	73.7
Horizontal Field Angle (10%)	86.9
Vertical Field Angle (10%)	94.6
Total Efficiency	86%

Radiant Intensity  
W/sr vs Angle

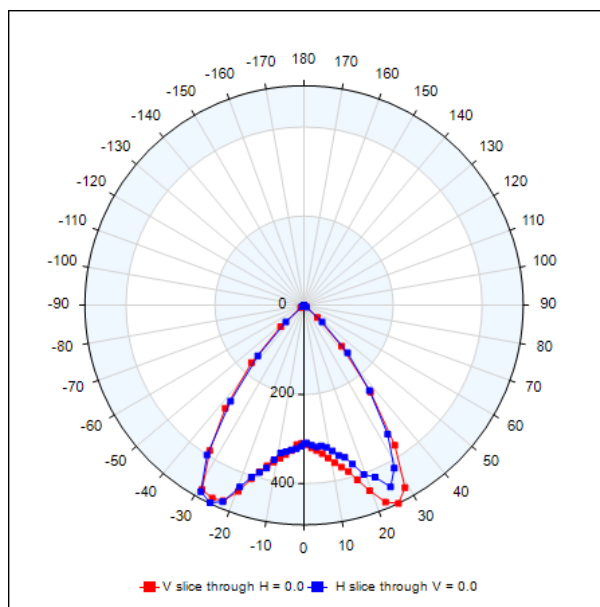
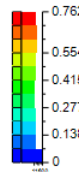
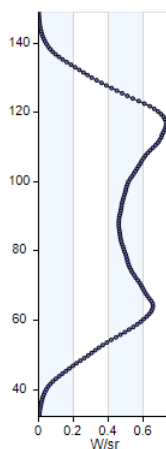
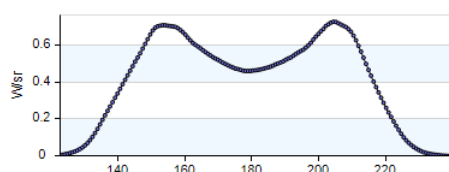
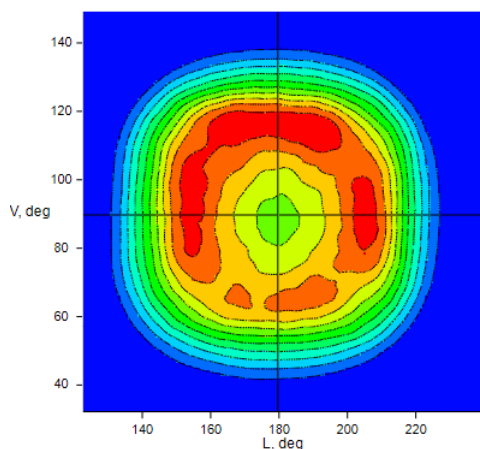
SFH 4170S

OSLON® P1616

High Power Infrared Emitter (850 nm)



70 DEGREE FWHM



Results shown are from measured prototype samples.