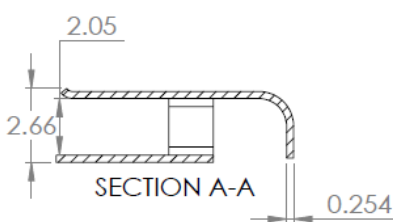
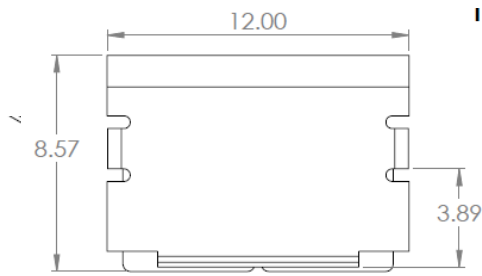


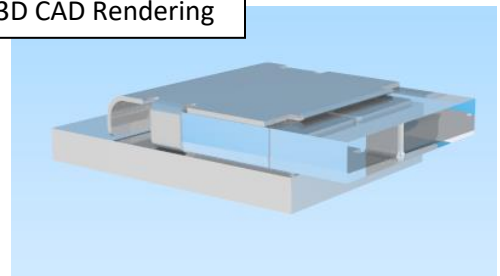
All CoreLED Systems, LLC Optical Components are designed and manufactured in the USA.

- Reflector Description: Surface Mounted Reflector, 2mm Thin Film Coupler
- Bright Tin Finish on Bronze Metal, Matte Tin or Nickel Tin also available
- Photometric Data: Contact CoreLED for IES files
- Mech Spec: SMR Family Part #11131, see Product Data Sheet
- Packaging & Solder Spec: see Product Data Sheet
- Emitter name: Osram OSIRE E3323 RGB (3.3mm x 2.25mm Footprint)
- Emitter P/N: KRTBDWLM32.32
- 42% Coupling Efficiency

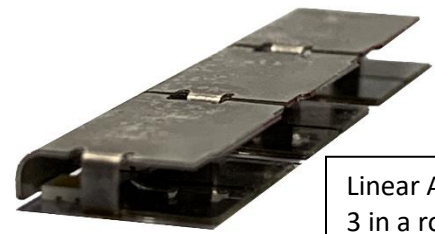
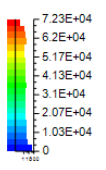
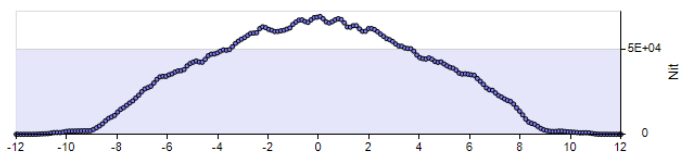
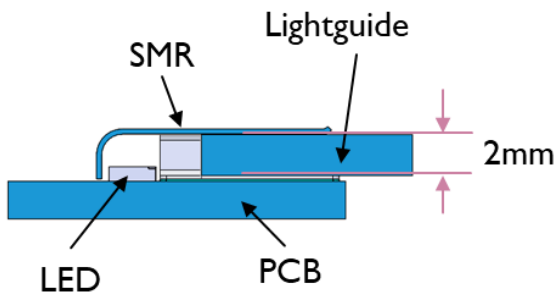
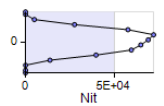
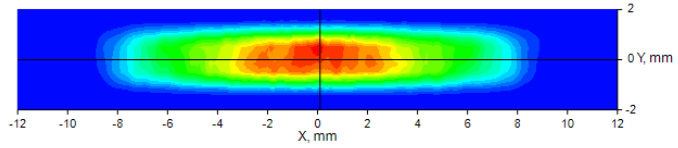
Dimensions:
 12 mm Width
 8.57mm Length
 2.66 mm Height
See Part Drawing for more details



3D CAD Rendering



Lit Appearance on Half-Inch Plane



Linear Array
 3 in a row
 prototype

Advantages:

- Surface-mount pick and place tape and reel optical component
- Converts top emitting LEDs into side-emitters
- Able to use with many automotive-approved LEDs
- Provides color-mixing for RGB LEDs
- Creates 'continuous lit output' zone for emitted light (eliminates dark spots)
- Mechanical protection for LEDs in thin applications
- Creates a defined entry point/stop for mechanical alignment/attachment to light guide
- Can be arranged in a linear array
- Good fit for size-constrained low-profile packages