

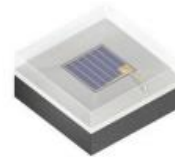
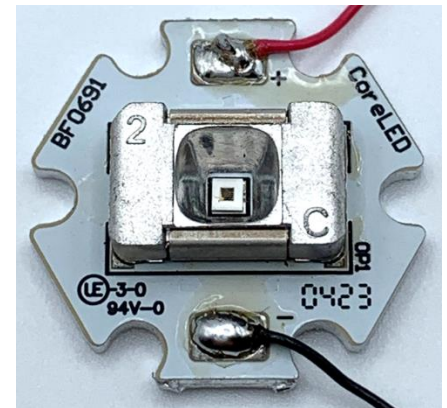
All CoreLED Systems, LLC Optical Components are designed and manufactured in the USA.

- Reflector Description: Surface Mounted Reflector, 5X5 Flood
- Al Direct Metallized reflector coating
- Photometric pattern: 70° FLOOD
- Photometric Data: Contact CoreLed for IES files, Default Watts = 1 Watt, 1 Million Rays
- Mech Spec: SMR Family Part #11003-STAR-P1616 see Product Data Sheet
- Packaging & Solder Spec: see Product Data Sheet
- Emitter name: OSOLON P1616 IR LED (1.6mm x 1.6mm Footprint)
- Emitter P/N: OSRAM SFH 4180S (940nm)

Dimensions:
 7.54 mm Width
 11.99 mm Length
 3.5 mm Height

See Part Drawing for more details

IES NEMA Type	5H x 5V
Horizontal Beam Angle (50%)	72.6
Vertical Beam Angle (50%)	68.2
Horizontal Field Angle (10%)	91.9
Vertical Field Angle (10%)	89.9
Total Efficiency	86%

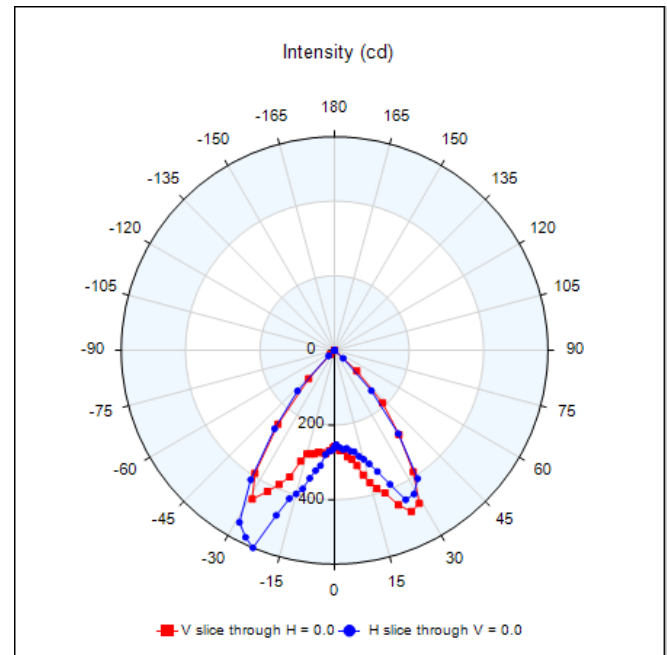
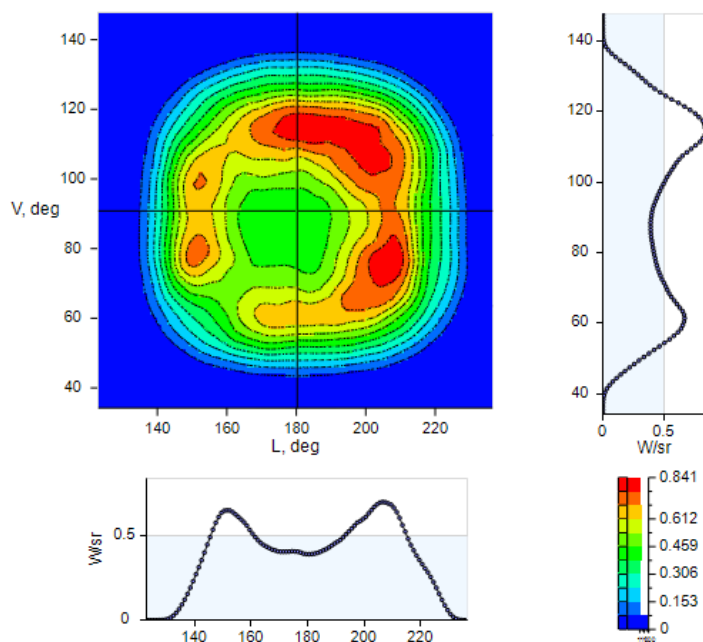


SFH 4180S

OSOLON® P1616
 High Power Infrared Emitter (940 nm)

70 DEGREE FWHM

Radiant Intensity W/sr vs Angle



Results shown are from measured prototype samples.