

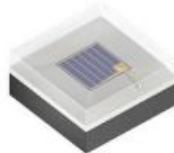
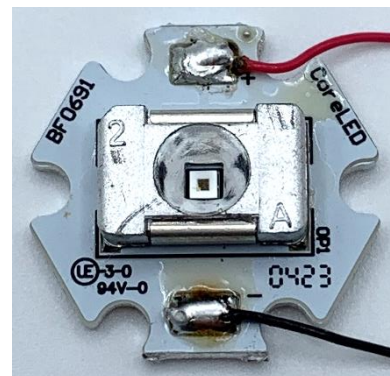
All CoreLED Systems, LLC Optical Components are designed and manufactured in the USA.

- Reflector Description: Surface Mounted Reflector, 4X4 Flood
- Al Direct Metallized reflector coating
- Photometric pattern: 22° FLOOD
- Photometric Data: Contact CoreLed for IES files, Default Watts = 1 Watt, 1 Million Rays
- Mech Spec: SMR Family Part #11001-STAR-P1616 see Product Data Sheet
- Packaging & Solder Spec: see Product Data Sheet
- Emitter name: OSOLON P1616 IR LED (1.6mm x 1.6mm Footprint)
- Emitter P/N: OSRAM SFH 4180S (940nm)

**Dimensions:**  
 7.54 mm Width  
 11.99 mm Length  
 3.5 mm Height

*See Part Drawing for more details*

IES NEMA Type	4H x 4V
Horizontal Beam Angle (50%)	23.1
Vertical Beam Angle (50%)	21.1
Horizontal Field Angle (10%)	61.2
Vertical Field Angle (10%)	63.3
Total Efficiency	85%



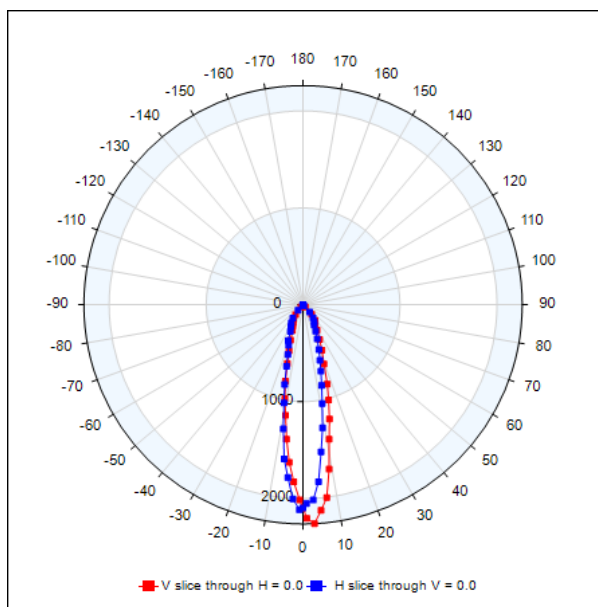
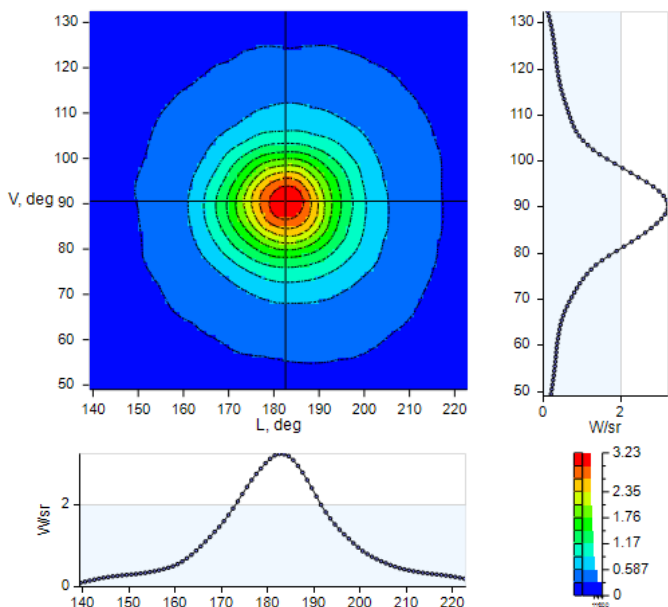
**SFH 4180S**

**OSOLON® P1616**

High Power Infrared Emitter (940 nm)

Radiant Intensity  
W/sr vs Angle

22 DEGREE FWHM



Results shown are from measured prototype samples.