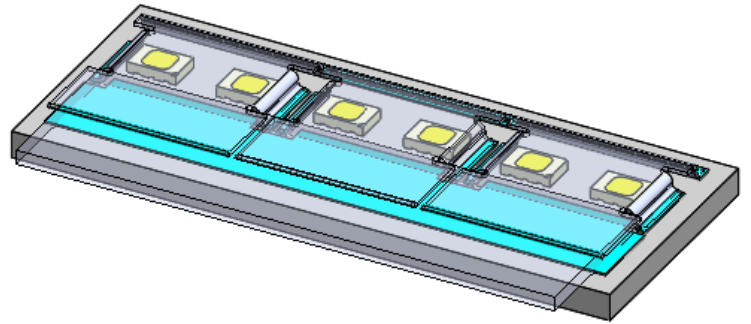
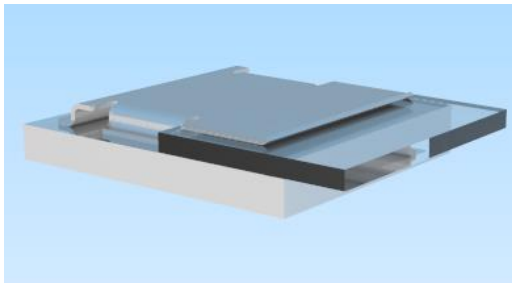


CoreLED P/N 11130

- 1mm Thin Film Coupler
 - Osram OSIRE E3323 RGB LED



Product Description:

1mm Light Guide Surface Mounted Reflector / Thin Film Coupler

- Turns a top-emitting LED into side-emitting LED for coupling into thin film light guide applications. Provides excellent color mixing for RGBW LEDs and high uniformity output.
- This surface mounted reflector is reflow soldered directly onto the PCB during the reflow process (same process as LED component).
- Can be used with many automotive-approved top-emitting LEDs with high lumen output. Osram OSIRE E3323 RGB used in prototype parts currently available.
- Creates continuous lit output zone for emitted light thereby eliminating dark spots.
- Delivered as part of the standard tape and reel process for high-volume applications.
- Reflector is made of bronze metal and has three possible finish options: bright tin, matte tin or nickel tin.

- Good fit for size-constrained low-profile packages. Part dimensions: 12mm x 10.48mm x 1.41mm. Fits with 1mm thick light guide/thin film. (Also available in 2mm Thin Film size).
- Provides mechanical protection for LEDs in thin applications.
- Creates a defined entry point/stop for mechanical alignment/attachment to light guide.
- Can be arranged in a linear array.

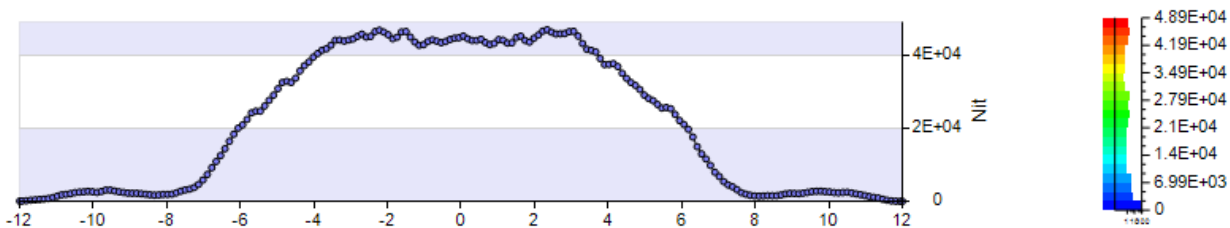
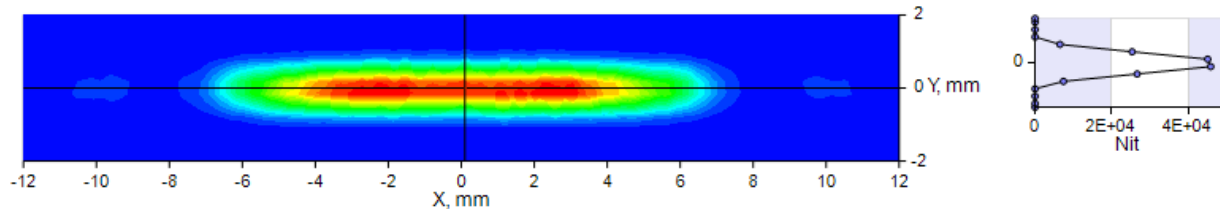
Input Coupling Pattern Profile

Oslon OSIRE E3323 RGB (Simulated)

Lit Appearance on Half-Inch Plane

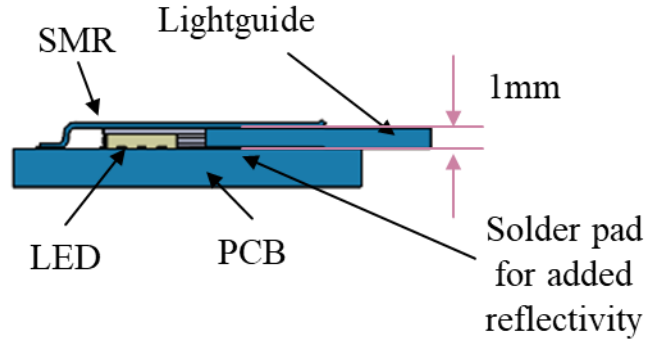
Result shown for bright tin finish

15-25% Coupling Efficiency (depending on height of LED)



IES files and Raytrace models are available upon request from
CoreLed Engineering.

Mechanical Profile:



FOR PROTOTYPE ONLY

NOTES:

- MATERIAL: 0.254mm (0.010") THICK 260 1/2 HARD BRASS
- PLATING: 5.0 MICRONS MINIMUM BRIGHT Sn OVER Cu FLASH, POST PLATED FOR PROTOTYPE
- ALL TOLERANCES +/- 0.25 mm AND +/- 3 DEGREES UNLESS OTHERWISE SPECIFIED

UNLESS OTHERWISE SPECIFIED:		NAME	DATE	CoreLed Systems, LLC
DIMENSIONS ARE IN MILLIMETERS		DRAWN	B.WELLS 8/29/22	
TOLERANCES:				TITLE: SMR Film Coupler 1mm Aperture
FRACTIONAL ±		CHECKED		
ANGULAR: MACH ± BEND ±		ENG APPR.		
TWO PLACE DECIMAL ±		MFG APPR.		
THREE PLACE DECIMAL ±		G.A.		SIZE DWG. NO. REV A P/N: 11130 1.2
INTERPRET GEOMETRIC TOLERANCING PER:		COMMENTS:		
MATERIAL				
FINISH				SCALE: 5:1
APPLICATION				WEIGHT:
DO NOT SCALE DRAWING				SHEET 1 OF 2

PROPRIETARY AND CONFIDENTIAL

THE INFORMATION CONTAINED IN THIS DRAWING IS THE SOLE PROPERTY OF CORELED SYSTEMS LLC. ANY REPRODUCTION IN PART OR AS A WHOLE WITHOUT THE WRITTEN PERMISSION OF CORELED SYSTEMS LLC IS PROHIBITED.

NEXT ASSY

USED ON

5

4

3

2

1

CAD files available upon request from CoreLed Engineering

LED Information

KRTBDWLM32.32

OSIRE[®] E3323

The OSIRE E3323 is designed for automotive ambient applications. With its compact size, the device offers a maximum of flexibility for various assembly situations.

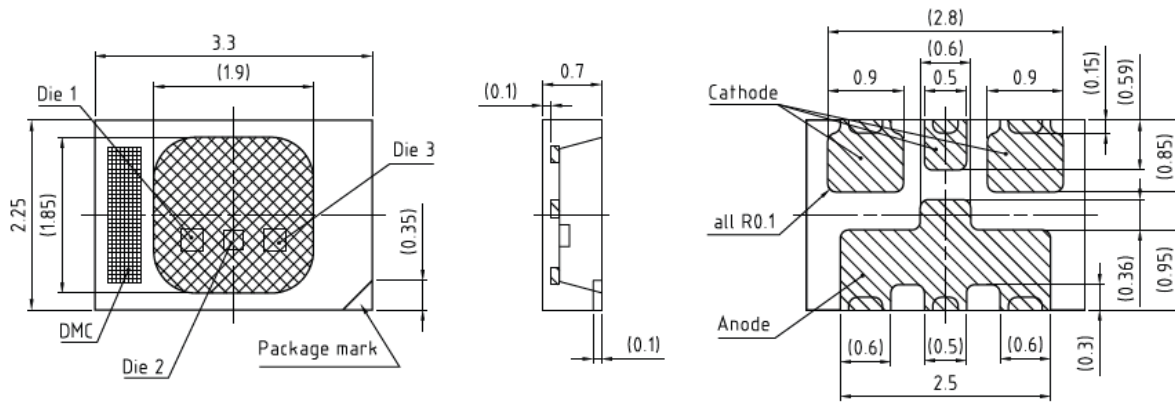
All measurement data of every single LED is made available at 10 and 50 mA via an imprinted data matrix code. This feature helps to reduce the optical measurement effort on customer side.



Ordering Information

Type	Brightness IF = 10 mA	Ordering code
KRTBDWLM32.32-T4U6-JW+AAAB-J3+R4S6-5V		Q65112A7940
red	IV = 315 ... 800 mcd	
true green	IV = 1120 ... 1800 mcd	
blue	IV = 125 ... 320 mcd	

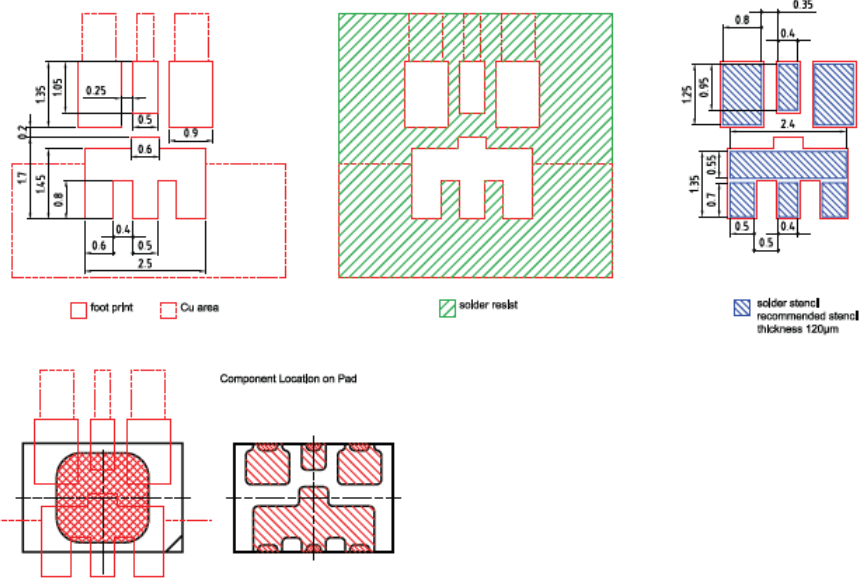
Dimensional Drawing ⁸⁾



LED Information

KRTBDWLM32.32

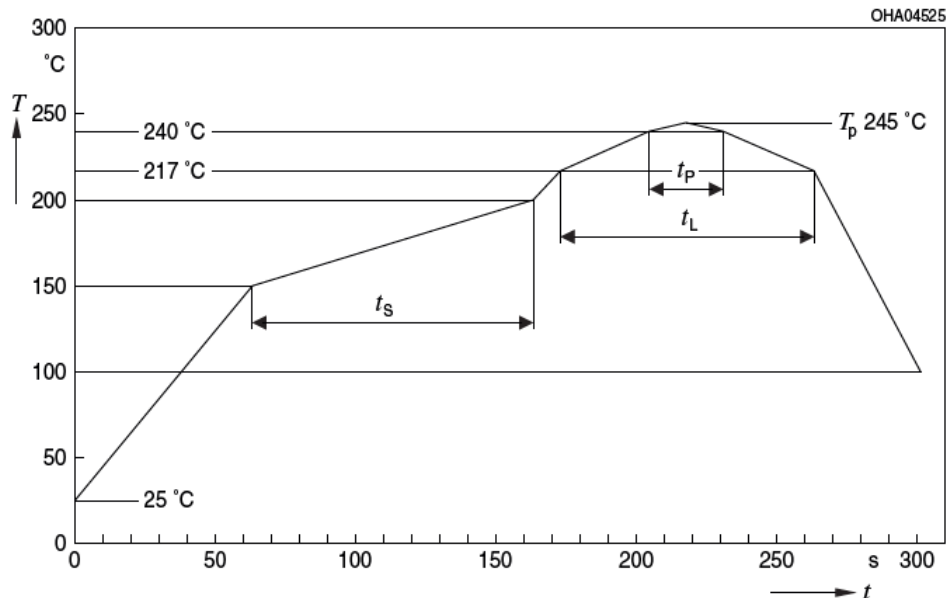
Recommended Solder Pad ⁸⁾



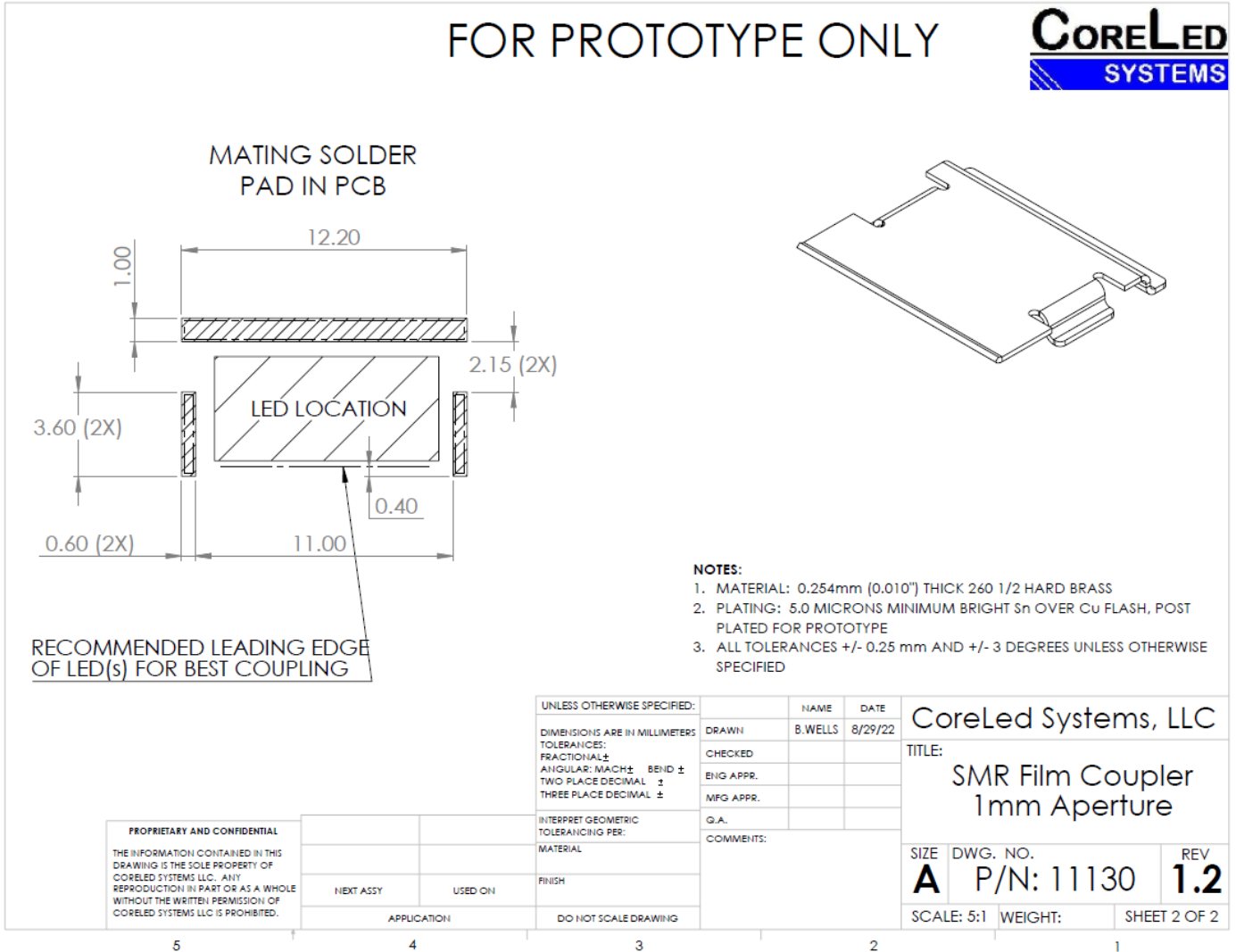
E062.3010.245 -02

Reflow Soldering Profile

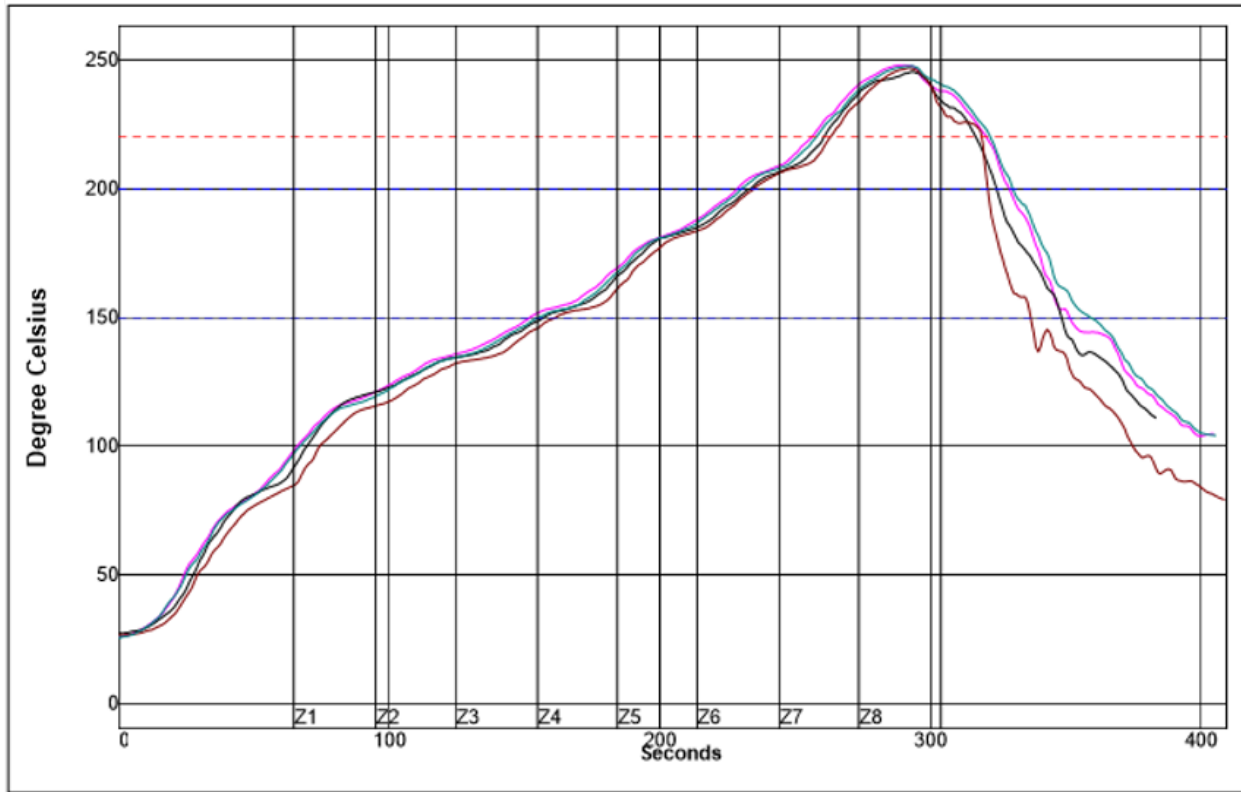
Product complies to MSL Level 2 acc. to JEDEC J-STD-020E



Solder Pad Drawing:



Reflow Profile:

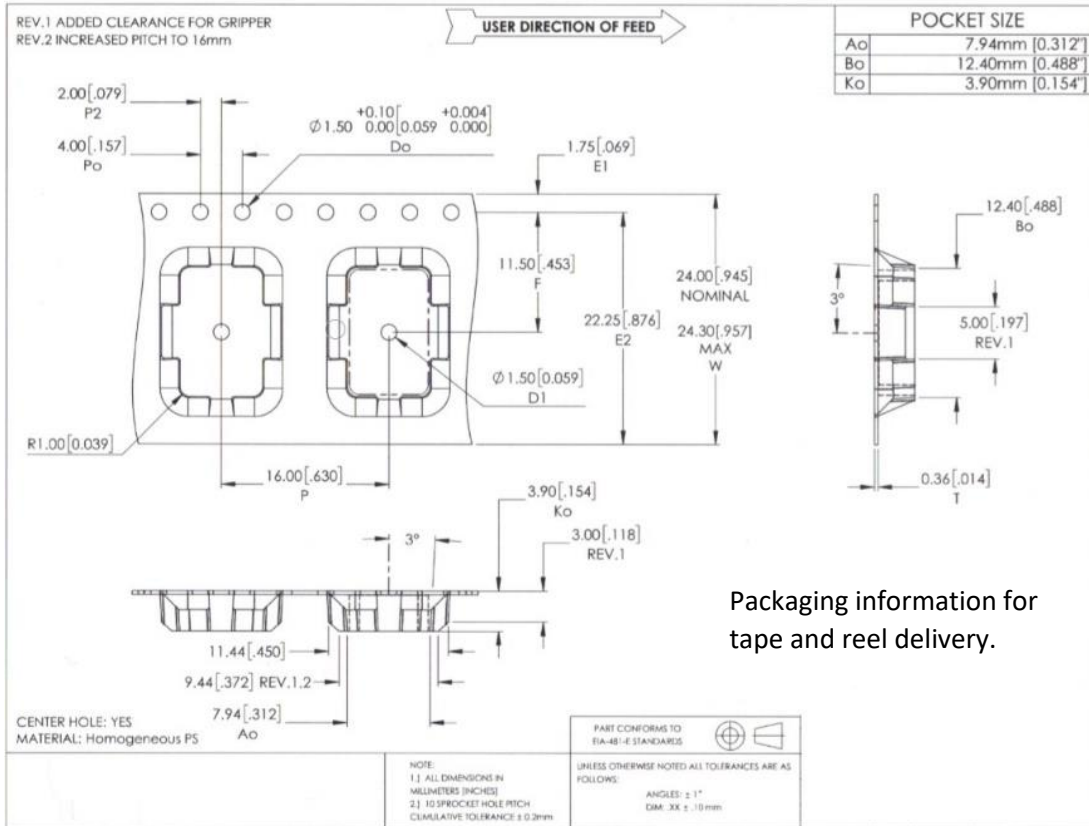


Setpoints (Degree Celsius)								
Zone	1	2	3	4	5	6	7	8
Top	125	148	152	173	210	235	268	257
Bottom	125	148	152	173	210	235	268	257
Conveyor Speed	50.0 cm/min							

Example Reflow profile used for testing of SMR units by CoreLed

Packaging:

Tape & Reel



Packaging information for tape and reel delivery.

