

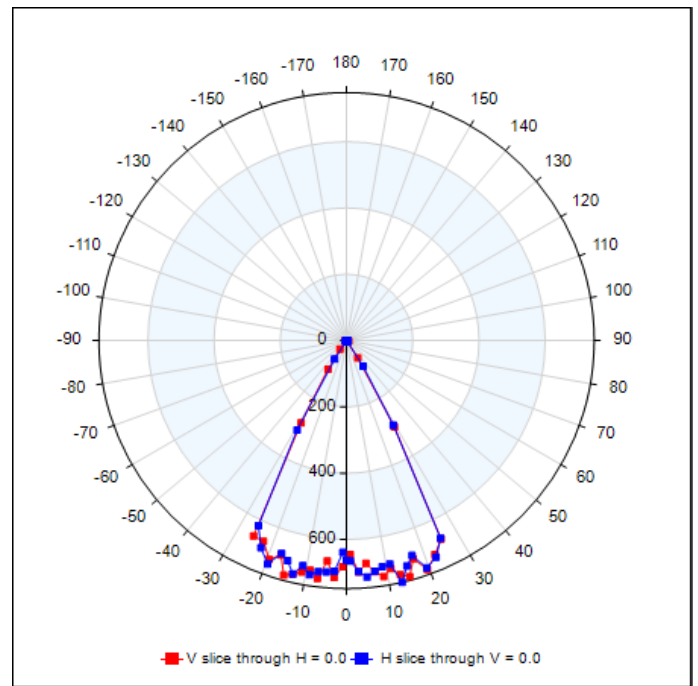
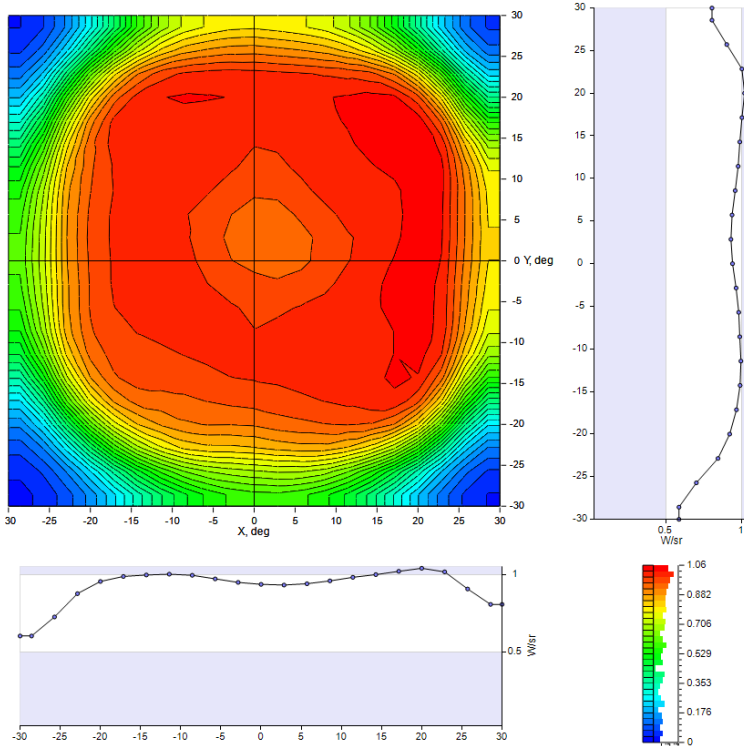
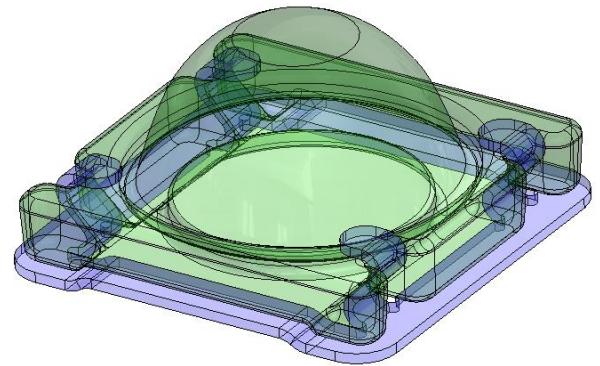
All CoreLed Systems, LLC Optical Components are designed and manufactured in the USA.

- Optic Description: Surfaced Mounted Optic, 5050 Flood
- Molded silicone (DOW MS\_1002\_Moldable\_Silicone)
- Photometric pattern: 4H X 4V FLOOD
- Photometric Data: Contact CoreLed for IES files,
- Mech Spec: SMO Family Part #12021, see Product Data Sheet
- Packaging & Solder Spec: see Product Data Sheet
- IR Emitter name: Synios SFH 4775S A01 (2mm x 2.75mm Footprint)

SMO Dimensions:  
 10.0 mm Width  
 10.0 mm Length  
 5.26 mm Height  
 Shown with clip.  
*See Part Drawing for more details*

**Measured Characteristics**

Horizontal Beam Angle (50%)	54
Vertical Beam Angle (50%)	54
Horizontal Field Angle (10%)	64
Vertical Field Angle (10%)	64
Total Efficiency	89 %
Total Luminaire Watts	0.9



ANGULAR DISTRIBUTION OF LUMINOUS INTENSITY (cd)

POLAR INTENSITY PLOT