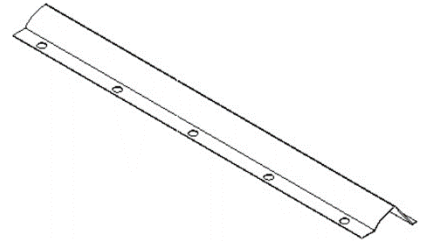


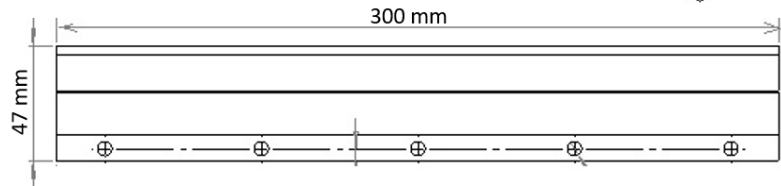
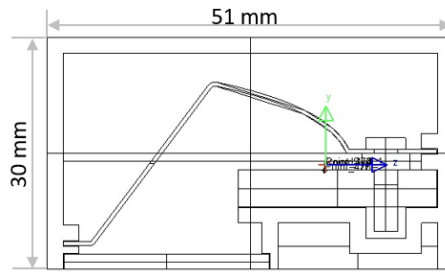
All CoreLed Systems, LLC Optical Components are designed and manufactured in the USA.

- Wallwash System: Indirect Reflector, Housing and Evonik Plexiglass Satinice DF20 Outer Lens
- Indirect Reflector: metalized extruded profile
- Housing: positions reflector and eliminates glare
- Closely packed LEDs: Simulation uses 8mm spacing.
- Suggested positioning 1-2ft away from the wall, 9' MH.
- Suggested lamp size: 1ft

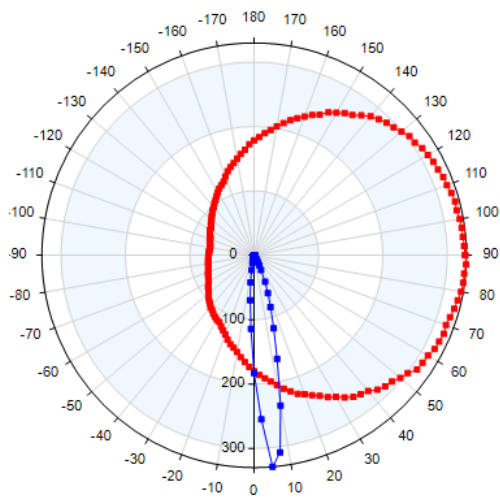


Characteristics

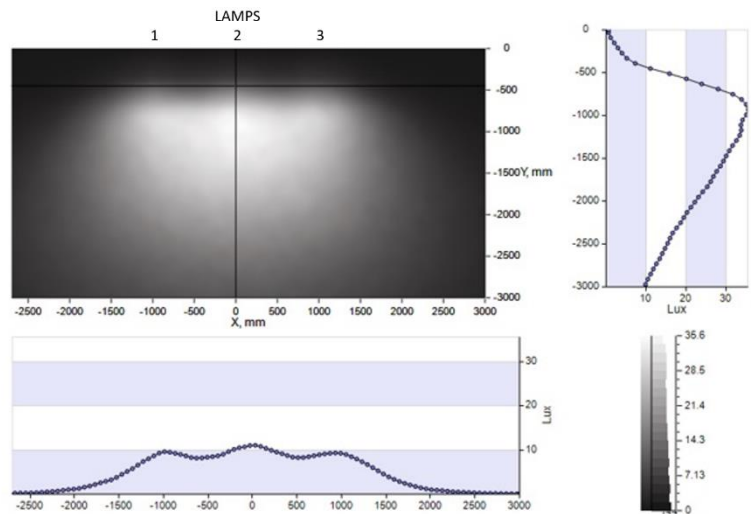
NEMA Type	7 H x 3 V
Maximum Candela	327.88
Maximum Candela Angle	0 H 5 V
Horizontal Beam Angle (50%)	92.9
Vertical Beam Angle (50%)	13.4
Horizontal Field Angle (10%)	136.9
Vertical Field Angle (10%)	33.3
Lumens Per Lamp	10 (30 lamps)
Total Lamp Lumens	300
Beam Lumens	65
Beam Efficiency	22 %
Field Lumens	123
Field Efficiency	41 %
Spill Lumens	15
Luminaire Lumens	138
Total Efficiency	46 %



simulation

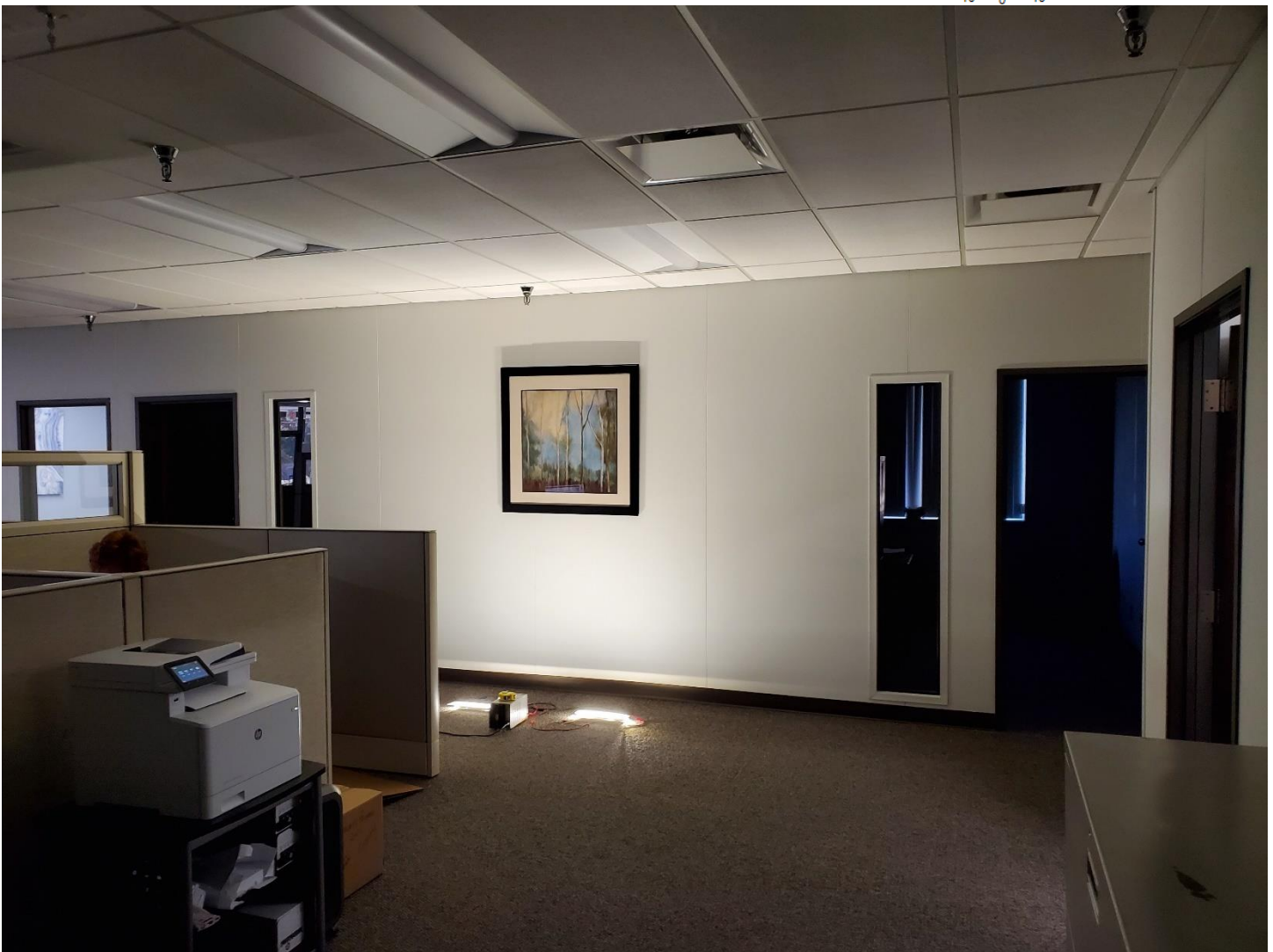
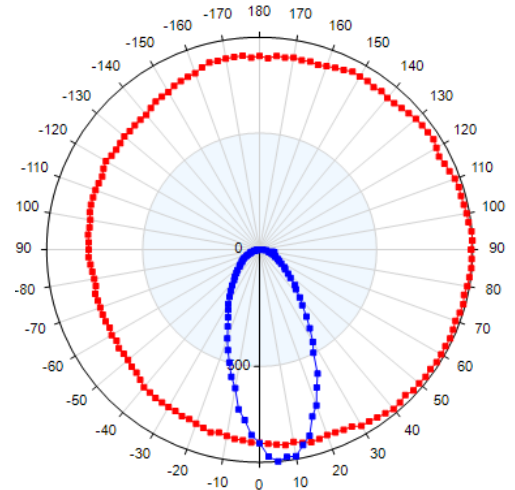


simulation



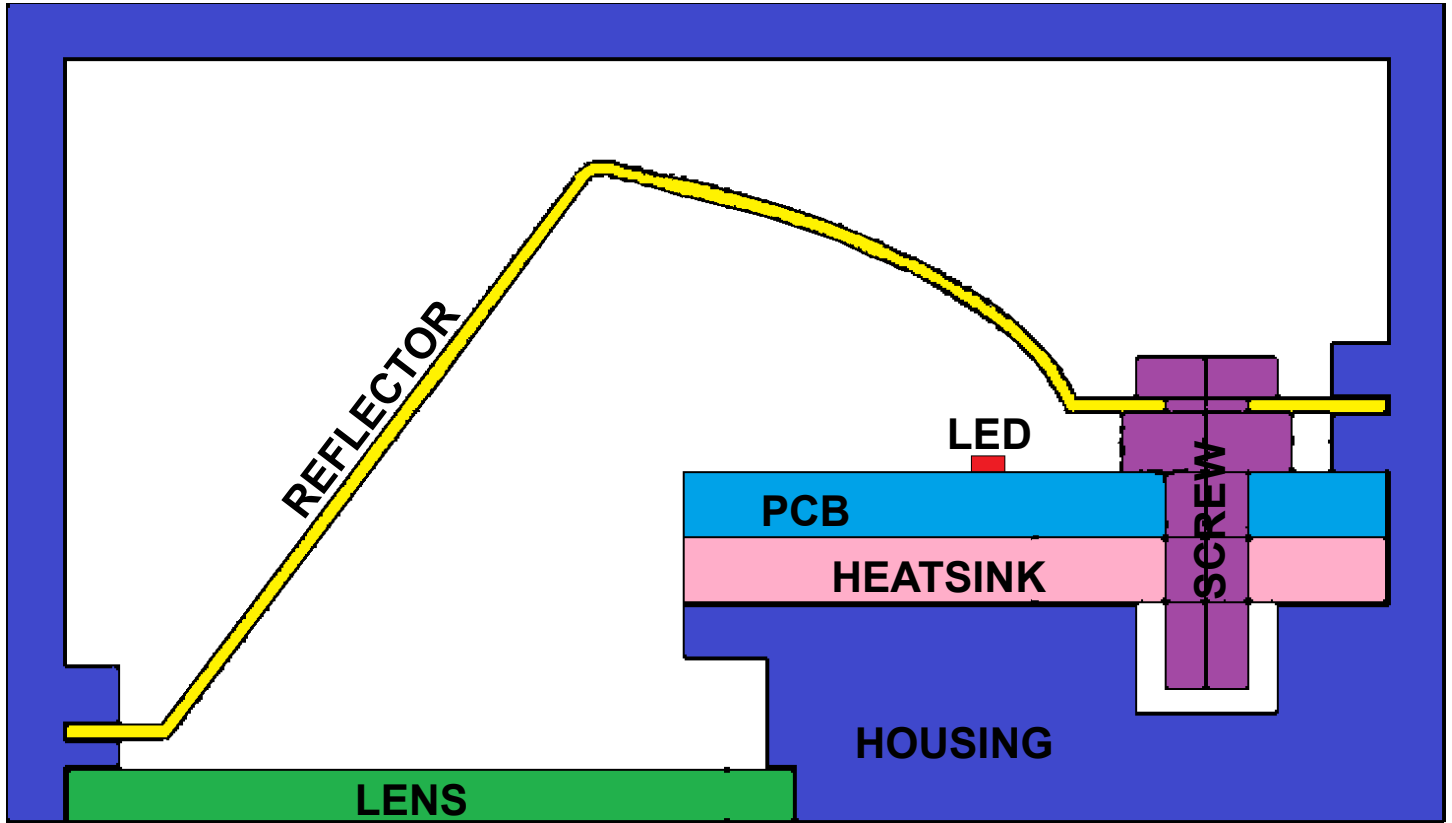
- Two prototype lamps:
 - Machined Housing/Heatsink
 - Standard OSRAM PrevaLED Linear PCB
 - Stamped Reflector
 - Evonik sheet stock Lens
- Positioned 2ft away from the 9ft wall
- Each lamp is 1ft long
- Center-to-center lamp spacing is 3ft

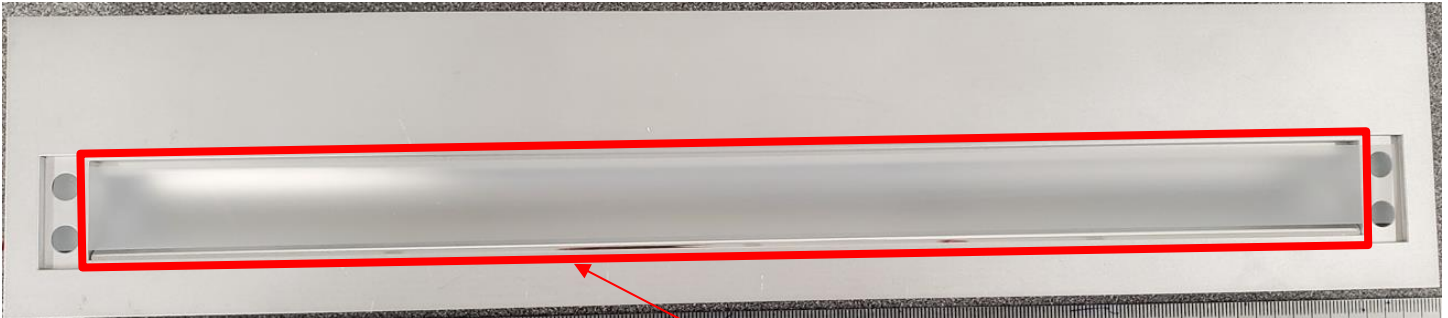
measured prototype











Portion of the lamp that lights

