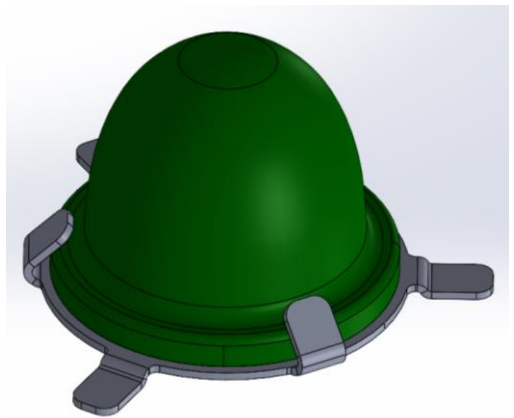


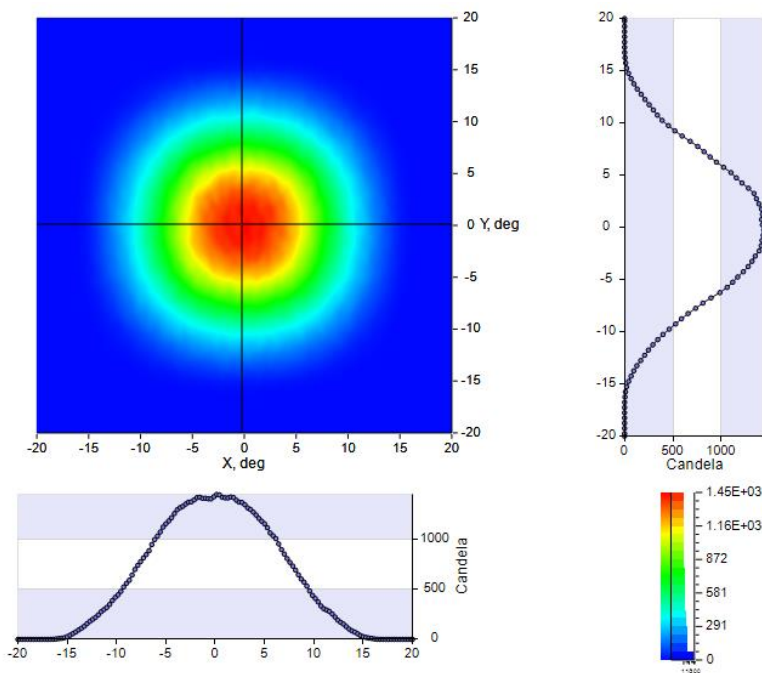
All CoreLed Systems, LLC Optical Components are designed and manufactured in the USA.

- Optic Description: Surfaced Mounted Optic, 2X2 Flood
- Molded silicone (DOW MS_1002_Moldable_Silicone)
- Photometric pattern: 2H X 2V FLOOD
- Photometric Data: Contact CoreLed for IES files, Lamp lumens = 150, Simulation
- Mech Spec: SMO Family Part #12002, see Product Data Sheet
- Packaging & Solder Spec: see Product Data Sheet
- Emitter name: Nichia E17 (1.7mm x 1.7mm Footprint)
- Emitter P/N: NCSLE17A Warm White

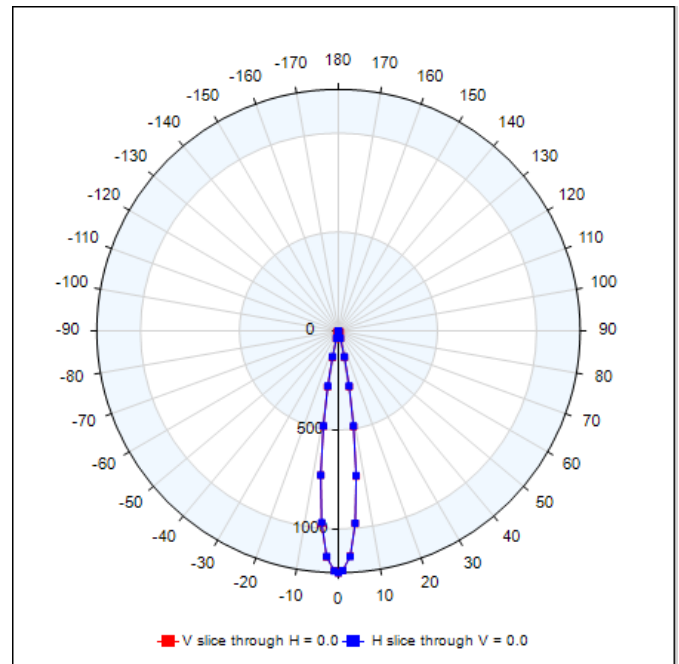
SMO Dimensions:
 10.5 mm Diameter
 8.59 mm Height
 Shown with clip.
 See Part Drawing for more details



IES NEMA Type	2H x 2V
Maximum Candela	1221
Horizontal Beam Angle (50%)	16.0
Vertical Beam Angle (50%)	16.0
Horizontal Field Angle (10%)	26.6
Vertical Field Angle (10%)	26.5
Total Rated Lamp Lumens	150
Total Efficiency	71.12%



LUMINOUS INTENSITY
CANDELA VERSUS ANGLE



FAR-FIELD INTENSITY DISTRIBUTION
16° FWHM