

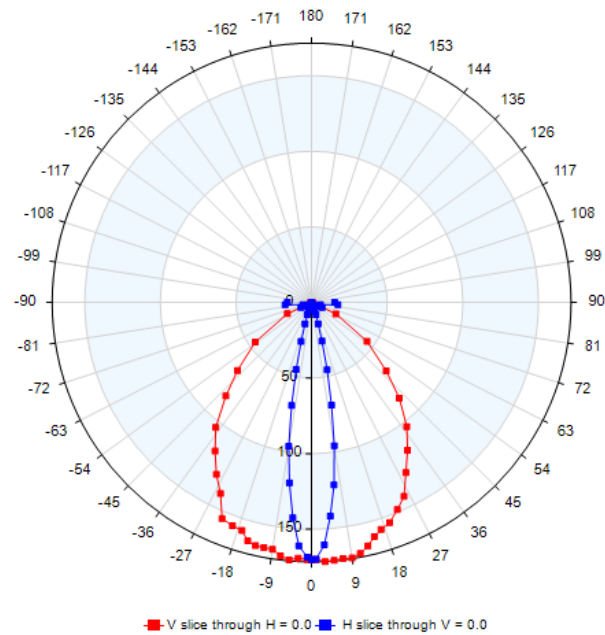
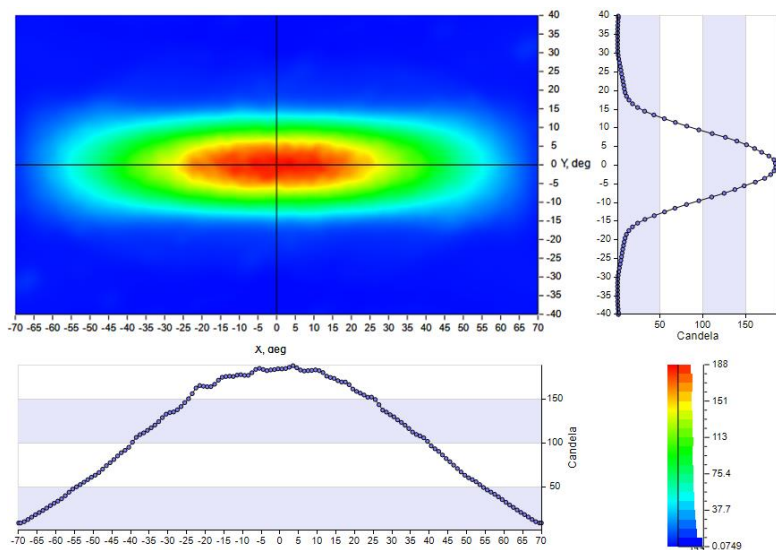
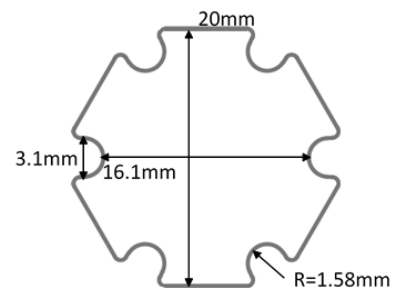
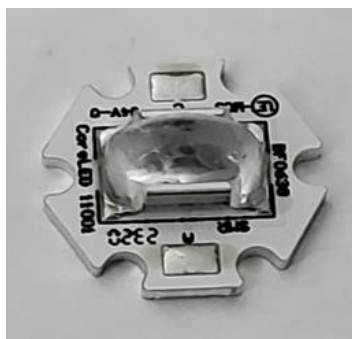
All CoreLed Systems, LLC Optical Components are designed and manufactured in the USA.

- Optic Description: Surfaced Mounted Optic, 7X3 Flood
- Molded silicone (DOW MS\_1002\_Moldable\_Silicone)
- Photometric pattern: 7H X 3V FLOOD
- Photometric Data: Contact CoreLed for IES files, Lamp lumens = 100, Measured Part
- Mech Spec: SMO Family Part #12001-STAR-E17, see Product Data Sheet (Starboard Sample for Prototype & Evaluation ONLY)
- Packaging & Solder Spec: see Product Data Sheet
- Emitter name: Nichia E17 (1.7mm x 1.7mm Footprint)
- Emitter P/N: NCSLE17A Warm White

SMO Dimensions:  
6.87 mm W x 11.6 mm L  
x 5.85 mm H  
Shown with clip

Starboard Dimensions:  
20mm Diameter

IES NEMA Type	7H x 3V
Maximum Candela	173
Horizontal Beam Angle (50%)	84
Vertical Beam Angle (50%)	19.5
Horizontal Field Angle (10%)	131
Vertical Field Angle (10%)	33
Total Rated Lamp Lumens	100
Total Efficiency	72.18%



LUMINOUS INTENSITY CANDELA VERSUS ANGLE

FAR-FIELD INTENSITY DISTRIBUTION