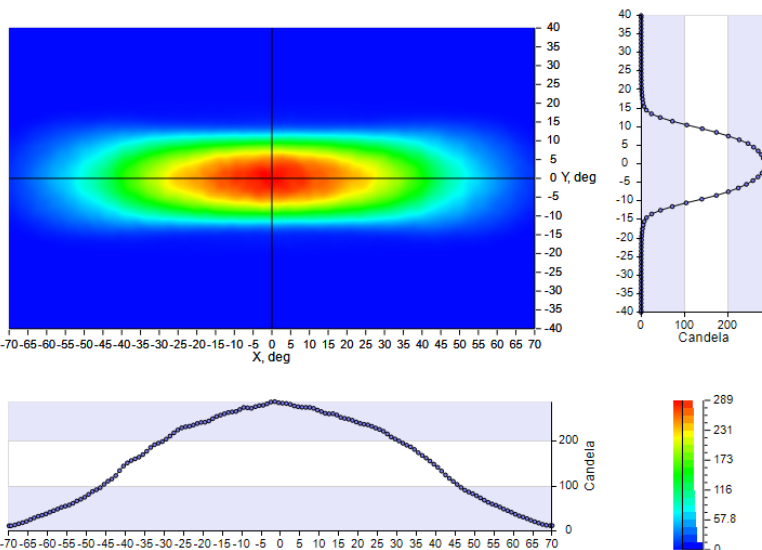
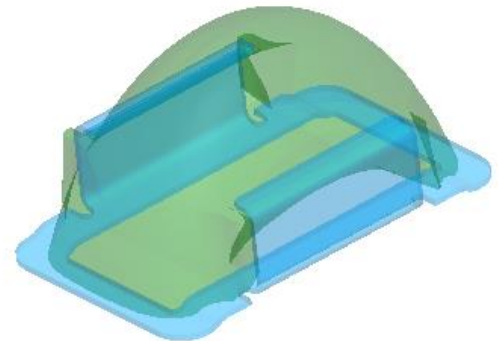


All CoreLed Systems, LLC Optical Components are designed and manufactured in the USA.

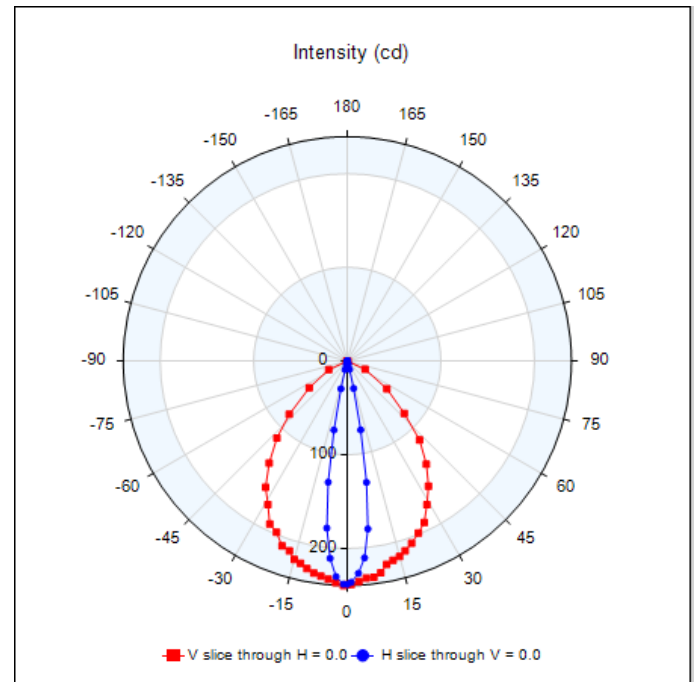
- Optic Description: Surfaced Mounted Optic, 6X2 Flood
- Molded silicone (DOW MS_1002_Moldable_Silicone)
- Photometric pattern: 6H X 2V FLOOD
- Photometric Data: Contact CoreLed for IES files, Lamp lumens = 150, Simulation
- Mech Spec: SMO Family Part #12001, see Product Data Sheet
- Packaging & Solder Spec: see Product Data Sheet
- Emitter name: Nichia E17 (1.7mm x 1.7mm Footprint)
- Emitter P/N: NCSLE17A Warm White

SMO Dimensions:
 6.87 mm Width
 11.6 mm Length
 5.85 mm Height
 Shown with clip.
See Part Drawing for more details

IES NEMA Type	6H x 2V
Maximum Candela	243
Horizontal Beam Angle (50%)	81.3
Vertical Beam Angle (50%)	18.7
Horizontal Field Angle (10%)	127.8
Vertical Field Angle (10%)	27.0
Total Rated Lamp Lumens	150
Total Efficiency	72.18%



LUMINOUS INTENSITY
CANDELA VERSUS ANGLE



FAR-FIELD INTENSITY DISTRIBUTION