

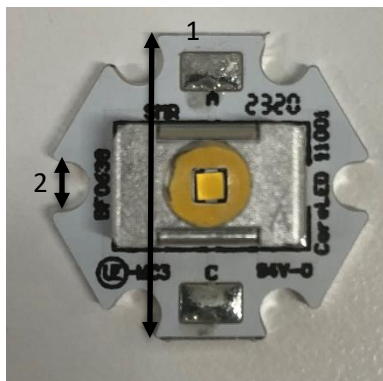
All CoreLed Systems, LLC Optical Components are designed and manufactured in the USA.

- Reflector Description: Surfaced Mounted Reflector, 5X5 Flood
- Al Direct Metallized reflector coating on glass-filled resin
- Photometric pattern: 28° FLOOD
- Photometric Data: Contact CoreLed for IES files,
Lamp lumens = 113, Measured Sample
- Mech Spec: SMR Family Part #11001-STAR-E17, see Product Data Sheet
- Packaging & Solder Spec: see Product Data Sheet
- Emitter name: Nichia E17 (1.7mm x 1.7mm Footprint)
- Emitter P/N: NCSWE17A(R8000)

SMR Dimensions:
7.54 mm Width
11.99 mm Length
3.5 mm Height

See Part Drawing for more details

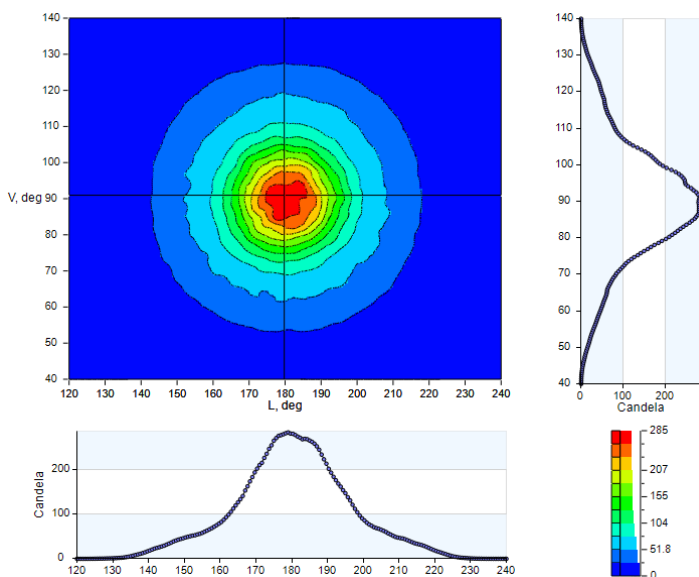
IES NEMA Type	5H x 5V
Maximum Candela	291
Maximum Candela Angle	0.0H -1.0V
Horizontal Beam Angle (50%)	28.7
Vertical Beam Angle (50%)	28.3
Horizontal Field Angle (10%)	73.2
Vertical Field Angle (10%)	72.4
Total Rated Lamp Lumens	113



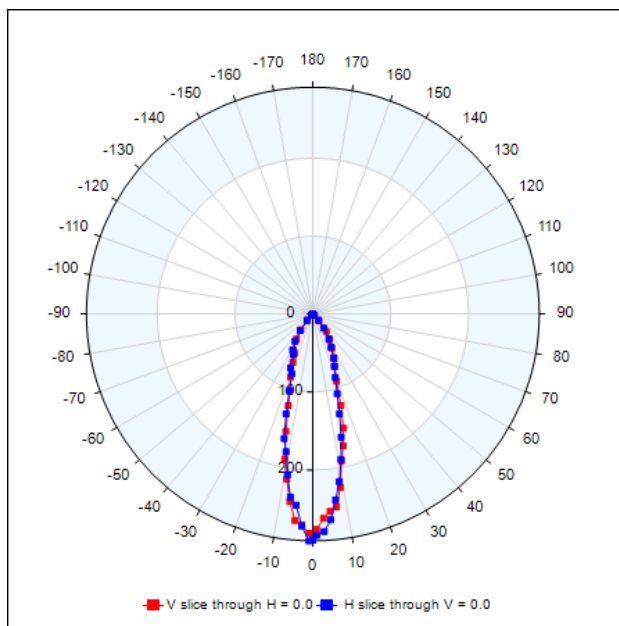
STARBOARD DIMENSIONS

1. 20 mm
2. 3 mm

A = Anode (+)
C = Cathode (-)



FLOOD / CANDELA VERSUS ANGLE



28 DEGREE FWHM