

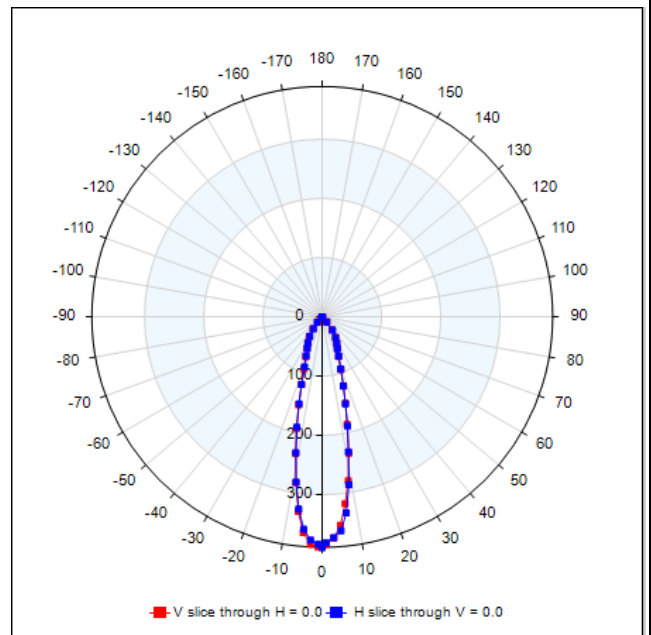
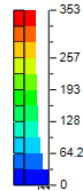
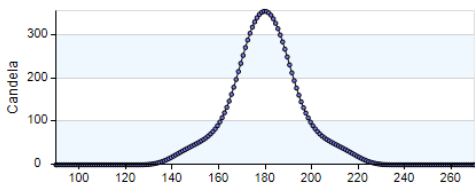
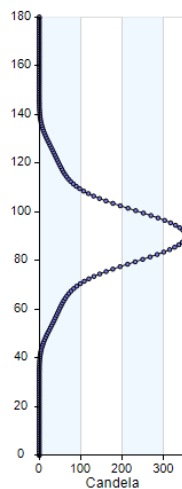
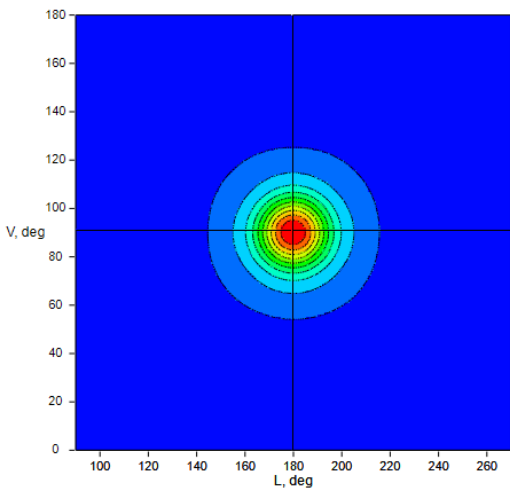
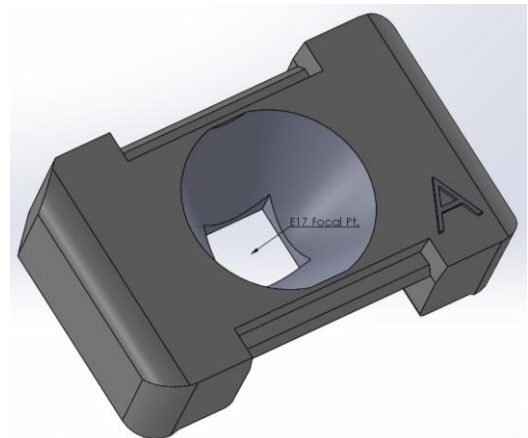
All CoreLed Systems, LLC Optical Components are designed and manufactured in the USA.

- Reflector Description: Surfaced Mounted Reflector, 4X4 Flood
- Al Direct Metallized reflector coating
- Photometric pattern: 25° FLOOD
- Photometric Data: Contact CoreLed for IES files, Default lumens = 150, 1 Million Rays
- Mech Spec: SMR Family Part #11001, see Product Data Sheet
- Packaging & Solder Spec: see Product Data Sheet
- Emitter name: Nichia E17 (1.7mm x 1.7mm Footprint)
- Emitter P/N: NCSWE17A(R8000)

Dimensions:
 7.54 mm Width
 11.99 mm Length
 3.5 mm Height

See Part Drawing for more details

IES NEMA Type	4H x 4V
Maximum Candela	389
Maximum Candela Angle	-1.0H 0.0V
Horizontal Beam Angle (50%)	25.6
Vertical Beam Angle (50%)	25.4
Horizontal Field Angle (10%)	67.1
Vertical Field Angle (10%)	66.7
Total Rated Lamp Lumens	150
Total Efficiency	84.95%



FLOOD / CANDELA VERSUS ANGLE

25 DEGREE FWHM